

LIFTKING®



NEW "M" SERIES Forklifts

Lift Capacity from 6,000 to 10,000 lbs.
2WD 2WS, 4WD 2WS



MOVING YOUR FUTURE



NEW "M" SERIES

All-Terrain Forklifts

6,000 to 10,000 lb. Capacity 2WD 2WS, 4WD 2WS

For over 30 years, Liftking® – the material handling specialists, have been meeting the challenges faced by today's industries. Liftking® introduces its recently improved "M" Series forklifts, featuring exceptional ground clearance, easy access to service points, ergonomic controls and easy operation. Quality and reliability are the hallmarks of all Liftking® forklifts – backed by the technical support and service of an extensive dealer network.

SPECIFICATIONS

ENGINE

Make / Model	Perkins 1104C-44	Cummins QSB3.9
Aspiration	Natural	Natural
Cylinders	4	4
Bore	3.937 in (100 mm)	4.02 in (102 mm)
Stroke	5.0 in (127 mm)	4.72 in (120 mm)
Compression Ratio	16.5:1	17.3:1
Displacement	243 cu.in.	3.9 lts.
Rated Speed	2600 rev/min	2500 rev/min
Engine Horsepower	86 bhp (64kw)	80 bhp (60kw)
Max. Torque	208 lb. ft. (282 N.m.)	201 lb. ft. (273 N.m.)
Speed at Max. Torque	1400 rev/min	1200 rev/min

AXLES

STEER AXLE 2WD / 4WD

Type	Heavy Duty industrial, single cylinder, fixed track 2WD fabricated, 4WD cast steel
Oscillation	22 degrees
Steer Angle	2WD: 65 degrees, 4WD: 30 degrees
Static Rating	40,000 lb.

FRONT DRIVE AXLE

Type	Heavy Duty final drive outboard planetary
Differential Lock	Electric, solenoid operated
Static Rating	40,000 lb.

STEERING

	6000 lb	8000, 10000 lb
Type	Hydrostatic single cylinder with manual override when engine is idling or stationary	
Right Angle Stack	234 in (5943 mm)	
Steering turns - lock to lock	4	4
Steer pump pressure	1800 psi	1800 psi
Turning circle	11 ft. (3.3m)	11.5 ft. (3.5m)
Between curbs (no brakes)	17 ft (5.2m)	17.5 ft. (5.3m)

HYDRAULIC SYSTEM

	6000 lb	8000, 10000 lb
PUMP		
Type	Gear	Gear
Flow	30 gpm (55.3 l/min)	30gpm (65.8 l/min)
Pressure	2000psi (135 bars)	2500psi (156bars)
FILTRATION - suction	25 Micron	
Control valve	Std. 3 spool sectional. Optional 4, 5 or 6 spool	

BRAKES

Type/Location	Fully enclosed inboard wet disc on drive axle
Working Area	347 in sq. (2236 cm sq)
Actuation	Hydraulically operated
Parking Brake	Hand Operated

DRIVE TRAIN

Transmission	Powershuttle
Speeds	4 forward / 4 reverse
Torque Converter Ratio	2.87:1
Direction change	Solenoid operated finger flick switch
Gear Selection	'H' pattern single lever fully modulated pressurized oil cooled hydraulic reverse packs
Gearbox	Full synchromesh
4WD PTO drive	Side mounted pod with solenoid operated box on-the-go push button engagement
Speed	Max 30 km/hr

ELECTRICS

Voltage	12 volt neg. ground
Battery Capacity	1000 A/H
Alternator capacity	45 A*
Safety Start	Yes - gear and direction change
Lighting	2 Work lights-front. 2 Flasher lights
Circuit breakers	12 volt neg. ground

*Higher Output Available

TIRES

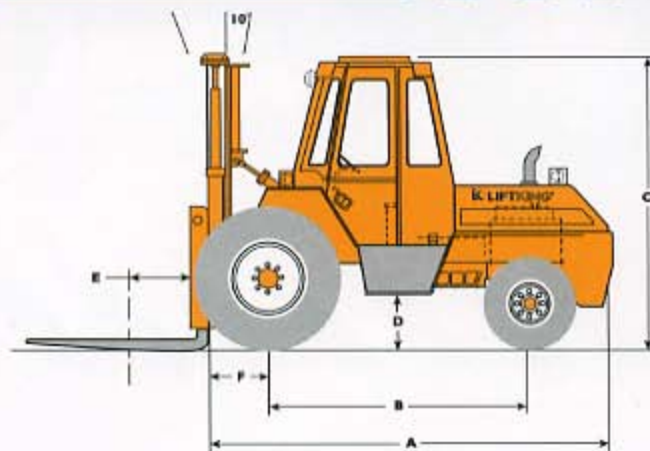
For 6000, 8000 and 10000 lb	
Steer	2WD STD 11L - 16 10 Ply
	4WD STD 12x16.5 10 Ply R4
For 6000, 8000 and 10000 lb	
Drive	2WD STD 16.9x24 10 Ply R4
	4WD STD 16.9x24 10 Ply R4

*Optional Tires Available.

CAPACITIES

Fuel Tank	21.0 gals (79.6 litres)
Engine Oil and Filter	2.0 gals (9.4 litres)
Hydraulic System	21.0 gals (79.6 litres)

DIMENSIONS



**Soft-Shift
Powershuttle Transmission**

'Powershuttle' is a true soft-shift transmission featuring large capacity modulated and oil cooled clutch packs, for smooth directional changes under full power. 'Hands on' fingertip switch selects forward/reverse for optimum cycle times. The single stage torque converter has a high stall ratio (2.87:1), for shock-free power transmission, maximum traction and loader bucket penetration.



Ergonomic Controls

Functional Cab

All New "M" Series forklifts offer a comfortable and functional operating environment. The suspension seat offers optimum driver comfort and support. The cab provides excellent visibility in all directions for improved safety on the job site. New "M" Series forklifts controls have been carefully located for ease of use and to maximize operator productivity. Tilt steering is also standard equipment.



Two Wheel Drive

The New "M" Series forklifts set new standards in performance. A high load capacity axle, 65 degree steer angle giving a very tight 17 ft. turning circle, single cylinder steering, zero camber angle for better road-ability, sealed-for-life pivots, and track rods safely recessed behind the axle housing.



Four Wheel Drive

Four Wheel Drive is through a transmission-mounted drive pod, and is engaged on-the-move in all 4 gears by push button operation. 22 angle axle oscillation ensures maximum ground contact and traction, and the 30 degree steer angle achieves a very tight turning circle of 17ft.

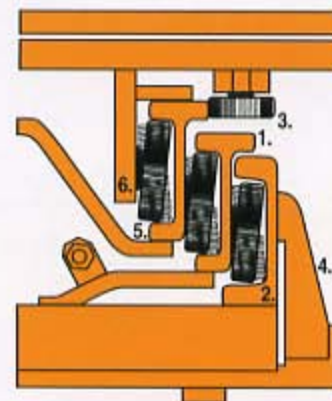
Full Synchromesh

All 4 forward and reverse gears are synchromesh, ensuring smooth, on-the-move gear changing. Gear ratios have been carefully selected to provide a well balanced spread of working ratios for all applications. The conventional 'H' pattern gear lever has a thumb operated 'dump' button for de-clutching.



**STRONG I-BEAM,
ALL ROLLER UPRIGHTS**

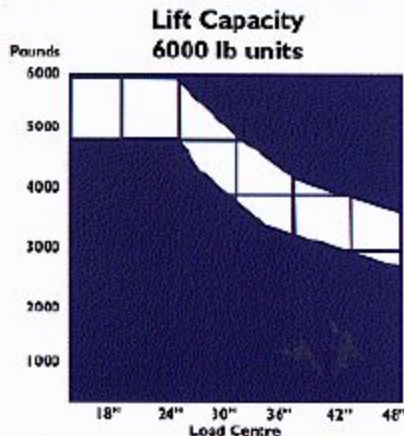
Top productivity over the long term depends upon the reliability of this major carrying component. Innovative design and strong upright construction add value to your forklifts investment.



1. Heavy duty 'nested rails' are full channels and I-sections specially rolled to provide maximum section strength where it's needed.
2. Canted rollers provide low friction rolling contact under normal and unbalanced conditions caused by uneven carriage loading.
3. Slide thrust roller on the carriage fork bar prevent inner rail spread when unbalanced loads are handled.
4. Wrap around tie bars are precision welded to outer channels. These thick tie bars minimize rail spread and twist.
5. Carriage and upright rollers are canted in opposite directions from top to bottom. This design helps rollers operate in the strong radius area and upright rails while providing rolling contact under varied load conditions. Carriage and upright rollers feature flexible seals that aid in retaining lubricant as normal wear occurs.
6. Roller shims are inserted on the roller shafts so proper operating clearance can be maintained. The shimming procedure is simple and effective for both carriage and upright rollers.

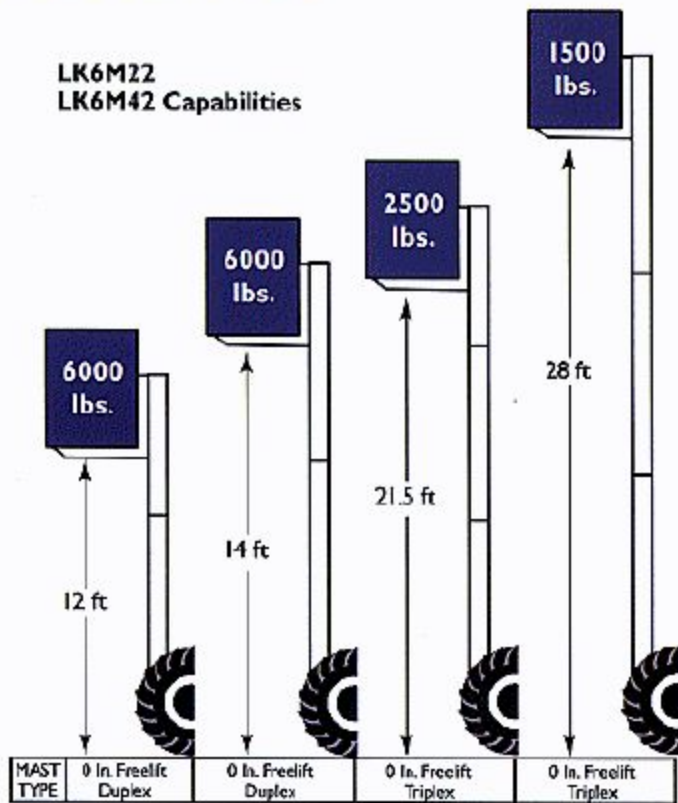
	6000 lb	8000, 10000 lb
A. Overall length - back of forks	146.0 in (3708 mm)	151.0 in (3835 mm)
B. Wheelbase	81.0 in (205.7 mm)	
C. Height over canopy	100.0 in (2540 mm)	
D. Ground clearance	12.0 in min (304 mm)	
E. Load centre - fork tines	24.0 in (610 mm)	
F. Forward projection	34.0 in (864 mm)	
Track - Drive Tires - 2WD/4WD	62.2 in (1581 mm)	
Track - Steer Tires - 2WD	64.9 in (1648 mm)	
IWD	73.9 in (1854 mm)	
Overall width	83.0 in (2107 mm)	84.0 in (2132 mm)
Weight	13,300 lb.	15,100 lb. / 17,200 lb.

CAPACITY CHART & MAST SPECIFICATIONS



Freelift
168" 2 section
168" 3 section

**LK6M22
LK6M42 Capabilities**



MAST SPECIFICATIONS

Max. Fork Height	Mast Section	Overall Height Mast Lowered Minimum 12" Ground Clearance	Freelift (Optional)
144"	2 SECTION	110"	72"
168"	2 SECTION	122"	86"
168"	3 SECTION	98"	56"
252"	3 SECTION	122"	84"
336"	3 SECTION	148"	112"
336"	4 SECTION	122"	84"

STANDARD MASTS, OPTIONAL MASTS AVAILABLE