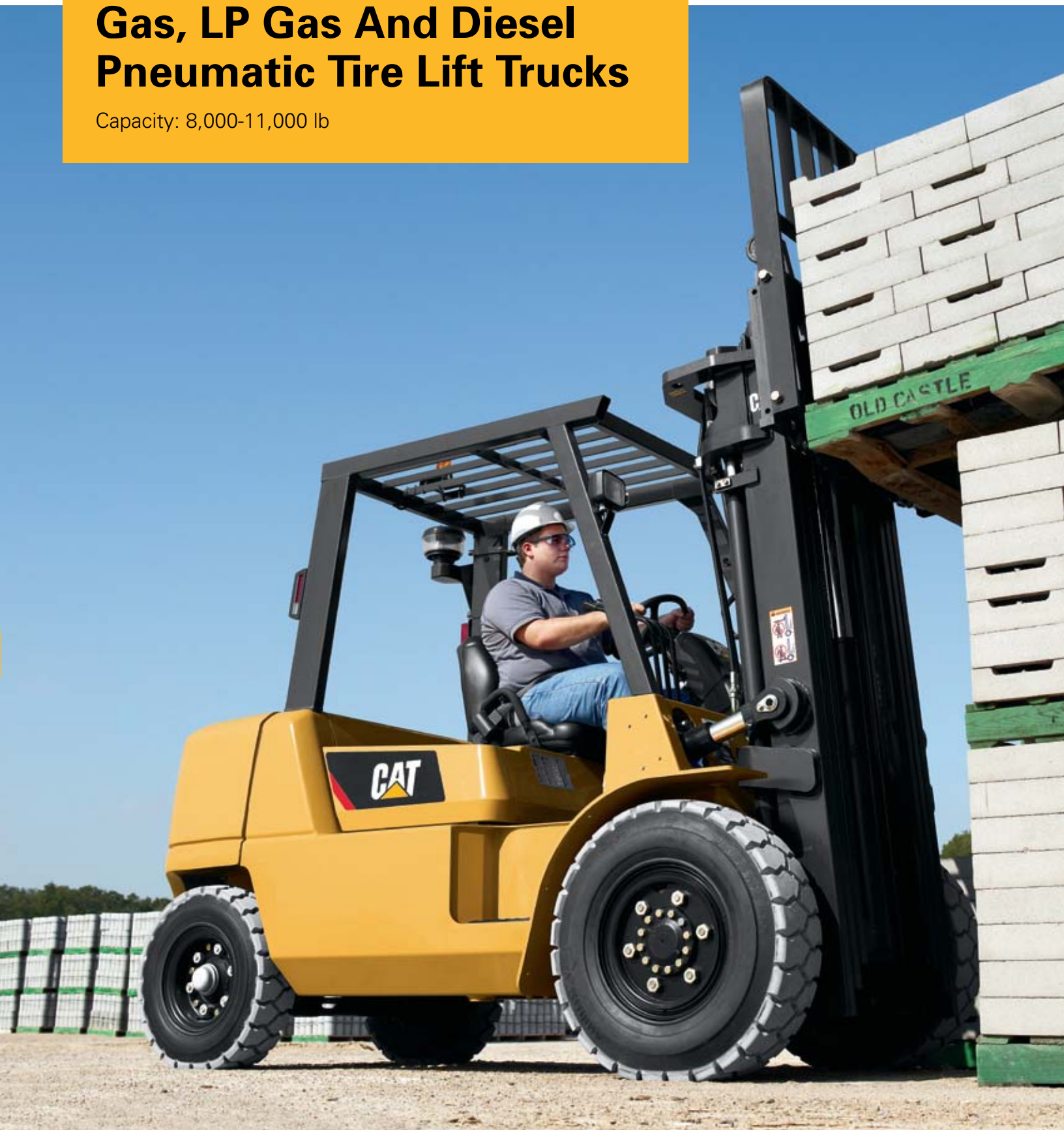


Gas, LP Gas And Diesel Pneumatic Tire Lift Trucks

Capacity: 8,000-11,000 lb



Quality



The fingertip transmission control and easy-to-reach hydraulic lever can help improve productivity while helping to reduce operator fatigue.

Model	Rated Capacity At 24 in Load Center	500 mm Load Center	Power
DP40K	8,000 lb	4,000 kg	Diesel
GP40K	8,000 lb	4,000 kg	Gas/LP Gas

Model	Rated Capacity At 24 in Load Center	600 mm Load Center	Power
DP40KL	9,000 lb	4,000 kg	Diesel
GP40KL	9,000 lb	4,000 kg	Gas/LP Gas
DP45K	10,000 lb	4,500 kg	Diesel
GP45K	10,000 lb	4,500 kg	Gas/LP Gas
DP50K	11,000 lb	5,000 kg	Diesel
GP50K	11,000 lb	5,000 kg	Gas/LP Gas

Operator Efficiency And Comfort

A clean, unobstructed work environment enables the operator to perform more efficiently. A generous floor area enhances operator mobility. The open-step entry with slip-resistant steel plates and an easy-to-reach grab bar help facilitate cab access.

A seat side convenience tray provides the operator with an easy to reach storage location. The convenience tray includes a metal clip board holder, cup holder, pen/pencil compartment and miscellaneous items compartment.



Semi-Suspension Seat And Tilt Steering Column

The seat offers a contoured fit designed for the operator who must shift and reposition the body repeatedly. For added comfort, this seat is adjustable for lumbar support and position in relation to the steering, hydraulic and foot controls.

The steering column provides smooth positioning of the wheel over a full five inches of movement to accommodate many operator preferences. Positioning the wheel fully forward facilitates easy entry and exit.

Effortless Hydrostatic Steering

The hydrostatic fluid system helps provide effortless steering with no jolting kickbacks. The system uses minimal components with no mechanical linkages for reduced maintenance.

Low-Effort Braking

Highly reliable, self-adjusting, vacuum-boosted service brakes help to reduce operator fatigue while providing controlled braking performance.

Extra Sound-And-Vibration Dampening

Excessive noise is reduced, subduing a potential source of operator fatigue. Measures include a sound-insulating barrier under the hood, a rubber floor mat to muffle powertrain operation, special vibration-absorbing mounts for the engine and steering pump, a whisper-quiet, nylon cooling fan.



Standard Indicator Package

A standard indicator package includes these items:

- 1 Engine coolant temperature gauge
- 2 Transmission oil temperature warning light
- 3 Optional air cleaner service warning light
- 4 Brake fluid level warning light
- 5 Engine oil pressure warning light
- 6 Alternator charging light
- 7 Cold start indicator (Diesel)
- 8 Fuel filter service warning light (Diesel)
optional low LPG level warning light (Gas/LP, LP)
- 9 Check engine warning light
- 10 Optional coolant level warning light
- 11 Fuel gauge (Diesel, Gas and Gas/LP)
- 12 Hour meter

Reliability



Downstroke cushioning helps provide smooth operational control for load handling, reduced operator fatigue and decreased load damage.



Easy And Tool-Free Engine Access

Releasing a single pin allows the seat back to fold forward for easy access to the engine. A gas-assisted cylinder enables the engine hood and seat assembly to be lifted easily and held open, exposing the engine compartment for quick, easy inspection and maintenance.

Advanced sound and vibration dampening help reduce operator fatigue. Features include a sound-insulating barrier under the hood; vibration-absorbing mounts for the engine, steering pump and steering column; and a double-insulated muffler.

High-Efficiency Engines

TB45 in-line 6-cylinder engines help provide smooth, quiet, reliable performance for a full range of applications. Mitsubishi in-line 6-cylinder diesel engines provide extended performance with high fuel efficiency in the toughest environments to help sustain productivity and uptime.

Overhead Air Intake

The air intake is positioned overhead to help optimize performance in dusty environments. A pusher-type, heavy-duty cooling fan helps to prevent the large, cross-flow radiator from clogging while providing sustained engine cooling.

LED Front Work Lights And Rear Combination Lights

Modern LED lighting technology offers extended service life. Brilliant LED front work lights and rear combination lights are more durable than incandescent lights. The standard LED lights are packaged complete with guards.



Hydrostatic Steer Axle

A priority valve is designed to direct the required oil flow to the steering pump to help ensure positive control during lift and tilt operations. Tapered roller bearings align the kingpins, helping to reduce wear and maintenance.

Good Visibility

Operators who can view the forks and surroundings without contorting their bodies are more productive. The mast design features narrow flanges that contribute to improved visibility. Chain, hose routings, and primary lift cylinders are located behind the mast channels. Square fork bars create a window between the upper and lower fork bars for improved visibility through the carriage. The deep web of the channels adds strength, while sturdy cross members provide torsional rigidity.



Customer Service



Cat Lift Trucks is committed to providing industry-leading customer service, delivered by experienced and reliable material handling dealers. We put customer needs first, with the most comprehensive customer support programs.

Dealers You Can Depend On

With hundreds of dealer locations throughout North and South America, Cat lift truck dealers provide more than lift trucks. From flexible financing options, parts, service and product support, our dealers are unsurpassed, delivering superior customer service that sets us apart from the competition—before, during and after the sale.

Our dealers make available leading support programs with every new Cat lift truck you purchase, including:

- Genuine Cat lift truck OEM parts
- Planned Maintenance
- Total maintenance and repair
- Promatch® parts for all brands of lift trucks
- Rental fleet availability
- Convenient dealer branch locations

Flexible Financing Options

Financing your next Cat lift truck is easy with our wide range of flexible leasing and purchasing options. Our industry-leading financing support can include:

- 12-Month interest free financing program
- 90-Day delayed payment program
- Factory subsidized lease rates
- Payment terms from 12-76 months
- Extended term, skip payment and early termination leases

Whether you want to finance or lease, your local Cat lift truck dealer can help customize a package tailored to your specific needs.

Best Warranty In The Industry

We stand behind our products, giving you peace of mind by helping your trucks stay on the job, day after day. Every new Cat lift truck is covered by a two year unlimited hours warranty that includes parts and labor regardless of service hours. All components and systems, including hydraulic, electrical, cooling, brake, fuel, steering, exhaust, mast and operator controls are covered. Combined with our standard 3 year / 6,000 hour extended powertrain warranty, you'll have confidence and peace of mind that only comes from owning a Cat lift truck.

First Planned Maintenance Free

Proper maintenance of your truck helps assure top performance over the long haul and helps extend truck longevity. That's why every Cat lift truck is backed by experienced and reliable dealers who make sure your truck is properly maintained. You'll experience this first hand because every new Cat lift truck gets its first planned maintenance completed by your local Cat lift truck dealer free of charge.



Parts Fast Or Parts Free Guarantee

This program ensures next-business-day delivery of parts for all brands of lift trucks, or they are free, including freight. We've made this guarantee available specifically to the owner or primary user of any brand of lift truck to substantiate our pledge.

Orders must be placed through your local dealer by 5:00 p.m. Eastern Standard Time, and you must advise the dealer at the time of order that the part is to be expedited under the terms of the guarantee. If your part doesn't come in by the next business day, we pay for it. It's as simple as that.

There are some exclusions including parts over 100 lbs and paint, chemicals or lubricants that require special handling. Ask your dealer for a full list of terms and conditions for the Parts Fast or Parts Free Guarantee.

Free Loaner Service Guarantee

If your lift truck is not repaired right the first time or within the quoted time, you can receive a free loaner truck until the repair is completed. This guarantee covers a wide range of lift truck makes and models. Ask your dealer for complete "Terms and Conditions" of this guarantee.

Specifications

Characteristics				DP40K		GP40K		DP40KL				
1	Capacity	at rated load center		lb	kg	8,000	4,000	8,000	4,000	9,000	4,000	
		at load center-distance		in	mm	24	500	24	500	24	600	
3	Power†	electric, diesel, gasoline, LP gas				diesel		LP gas		diesel		
4	Tire type	cushion, pneumatic				pneumatic / pneumatic		pneumatic / pneumatic		pneumatic / pneumatic		
5	Wheels (x = driven)	number front / rear				2x / 2		2x / 2		2x / 2		
Dimensions				DP40K		GP40K		DP40KL				
10	Lift	maximum fork height with rated load		in	mm	198.8	5,050	198.8	5,050	198.8	5,050	
11	Lift with standard two-stage mast	maximum fork height		in	mm	131.9	3,350	131.9	3,350	131.9	3,350	
		free fork height		in	mm	5.9	150	5.9	150	5.9	150	
13	Forks	thickness x length x width		in	mm	2 x 48 x 5.9	50 x 1,220 x 150	2 x 48 x 5.9	50 x 1,220 x 150	2 x 48 x 5.9	50 x 1,220 x 150	
	Fork spacing	out-to-out minimum / maximum		in	mm	12.6 / 46.6	320 / 1,184	12.6 / 46.6	320 / 1,184	12.6 / 46.6	320 / 1,184	
14	Tilt	forward / backward		deg		6° / 10°		6° / 10°		6° / 10°		
15	Overall dimensions	length to fork face		in	mm	120.9	3,070	120.9	3,070	122.8	3,120	
16		width	with standard tires		in	mm	55.7	1,415	55.7	1,415	57.5	1,460
			w / optional duals		in	mm	70.1	1,780	70.1	1,780	70.1	1,780
17		height	with lowered mast		in	mm	91.3	2,320	91.3	2,320	91.3	2,320
			seat height		in	mm	43.0	1,093	43.0	1,093	43.0	1,093
to top of overhead guard			in	mm	88.6	2,250	88.6	2,250	88.6	2,250		
with extended mast			in	mm	179.9	4,570	179.9	4,570	179.9	4,570		
21	Minimum outside turning radius		in	mm	107.7	2,735	107.7	2,735	109.3	2,775		
22	Load moment constant		in	mm	21.9	557	21.9	557	21.9	557		
23	Minimum aisle – 90° stack – zero clearance w / out load		in	mm	129.6	3,292	129.6	3,292	131.2	3,332		
Performance				DP40K		GP40K		DP40KL				
40	Speeds	travel speed* loaded / empty		mph	km/h	10.9 / 12.1	17.5 / 19.5	11.5 / 12.4	18.5 / 20.0	11.2 / 12.1	18.0 / 19.5	
41		lift speed loaded / empty		mph	mm/s	98 / 102	500 / 520	100 / 100	510 / 510	98 / 102	500 / 520	
42		lowering speed loaded / empty		mph	mm/s	98 / 98	500 / 500	98 / 98	500 / 500	98 / 98	500 / 500	
43	Drawbar pull	loaded at 1 mph (1.6 km)		lb	N	4,451	19,800	5,417	24,100	4,361	19,400	
		loaded maximum		lb	N	5,238	23,300	6,272	27,900	5,103	22,700	
44	Gradeability	loaded at 1 mph (1.6 km)		%		21.6		27.0		21.5		
		maximum loaded / empty		%		25.7 / 27.1		32.0 / 27.3		25.4 / 25.5		
Weight				DP40K		GP40K		DP40KL				
50	Empty		lb	kg	12,588	5,710	12,280	5,570	13,492	6,120		
51	Axle load	with rated load front / rear		lb	kg	19,114 / 2,293	8,670 / 1,040	18,916 / 2,183	8,580 / 990	19,533 / 2,778	8,860 / 1,260	
		without load front / rear		lb	kg	5,644 / 6,945	2,560 / 3,150	5,423 / 6,856	2,460 / 3,110	5,622 / 7,871	2,550 / 3,570	
Chassis				DP40K		GP40K		DP40KL				
60	Tire size	front, standard		in		8.25 x 15-14PR		8.25 x 15-14PR		300 x 15-20PR		
		front, optional duals		in		7.50 x 16-12PR		7.50 x 16-12PR		7.50 x 16-12PR		
61		rear		in		7.00 x 12-12PR		7.00 x 12-12PR		7.00 x 12-12PR		
62	Wheelbase		in	imm	78.7	2,000	78.7	2,000	78.7	2,000		
63	Tread width	front, standard tires		in	imm	46.3	1,175	46.3	1,175	46.3	1,175	
		front, optional duals		in	mm	51.6	1,310	51.6	1,310	51.6	1,310	
64		rear tires		in	mm	46.5	1,180	46.5	1,180	46.5	1,180	
65	Ground clearance		at lowest point @ mast		in	mm	5.9	150	5.9	150		
66			at center of wheelbase		in	mm	9.8	250	9.8	250		
67	Brakes	service				hydraulic w / vacuum boost		hydraulic w / vacuum boost		hydraulic w / vacuum boost		
68		parking				hand, mechanical		hand, mechanical		hand, mechanical		
Powertrain				DP40K		GP40K		DP40KL				
80	model				S6S		TB45		S6S			
81	Engine	continuous output S.A.E. gross		HP	kW	84	62.5	97	72.0	84	62.5	
		at r.p.m.				2,450		2,450		2,450		
82	maximum torque S.A.E. gross	lb-ft	kg-m	184	25.5	207	28.6	184	25.5			
		at r.p.m.				1,600		1,200		1,600		
83	cylinder / displacement		cu in	cm³	6 / 305	6 / 4,996	6 / 275	6 / 4,500	6 / 305	6 / 4,996		
84	Transmission		type		powershift		powershift		powershift			
85	number of speeds forward / reverse				1 / 1		1 / 1		1 / 1			
86	Relief pressure		for attachments		psi	bar	2,770	191	2,770	191		
87	Noise level		mean value at operator's ear Leq		dB(A)		84.5		84.5			

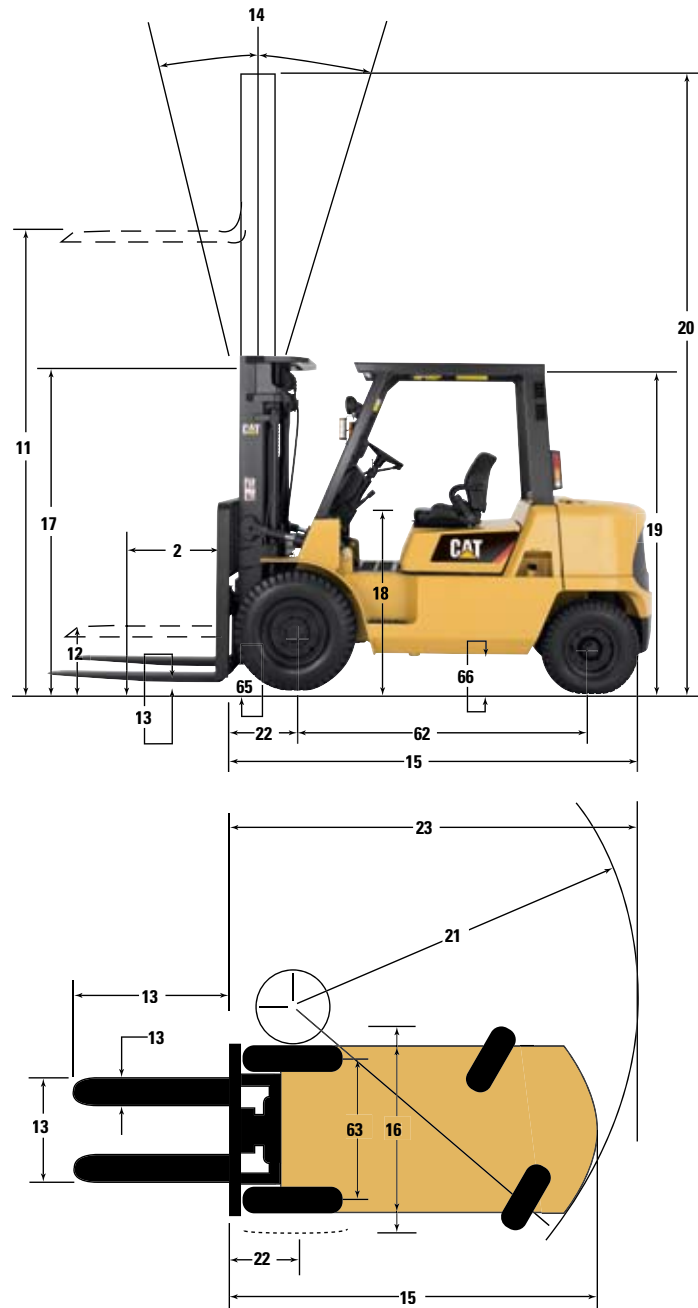
* For optional 2-speed transmission, add 2.5 mph (4.0 km/h). 2-speed transmission standard on models DP50K and GP50K.

† Contact your local Cat lift truck dealer for information on gas powered models.

GP40KL		DP45K		GP45K		DP50K		GP50K	
9,000	4,000	10,000	4,500	10,000	4,500	11,000	5,000	11,000	5,000
24	600	24	600	24	600	24	600	24	600
LP gas		diesel		LP gas		diesel		LP gas	
pneumatic / pneumatic		pneumatic / pneumatic		pneumatic / pneumatic		pneumatic / pneumatic		pneumatic / pneumatic	
2x / 2		2x / 2		2x / 2		2x / 2		2x / 2	
GP40KL		DP45K		GP45K		DP50K		GP50K	
198.8	5,050	198.8	5,050	198.8	5,050	179.5	4,560	179.5	4,560
131.9	3,350	131.9	3,350	131.9	3,350	132.3	3,360	132.3	3,360
5.9	150	5.9	150	5.9	150	6.3	160	6.3	160
2 x 48 x 5.9	50 x 1,220 x 150	2 x 48 x 5.9	50 x 1,220 x 150	2 x 48 x 5.9	50 x 1,220 x 150	2.4 x 48 x 5.9	60 x 1,220 x 150	2.4 x 48 x 5.9	60 x 1,220 x 150
12.6 / 46.6	320 / 1,184	12.6 / 46.6	320 / 1,184	12.6 / 46.6	320 / 1,184	13.4 / 46.6	340 / 1,184	13.4 / 46.6	340 / 1,184
6° / 10°		6° / 10°		6° / 10°		6° / 10°		6° / 10°	
122.8	3,120	125.0	3,175	125.0	3,175	130.1	3,305	130.1	3,305
57.5	1,460	57.5	1,460	57.5	1,460	57.5	1,460	57.5	1,460
70.1	1,780	70.1	1,780	70.1	1,780	70.1	1,780	70.1	1,780
91.3	2,320	94.5	2,400	94.5	2,400	94.5	2,400	94.5	2,400
43.0	1,093	43.0	1,093	43.0	1,093	43.0	1,093	43.0	1,093
88.6	2,250	88.6	2,250	88.6	2,250	88.6	2,250	88.6	2,250
179.9	4,570	179.9	4,570	179.9	4,570	180.7	4,590	180.7	4,590
109.3	2,775	111.0	2,820	111.0	2,820	116.7	2,965	116.7	2,965
21.9	557	22.1	562	22.1	562	22.9	582	22.9	582
131.2	3,332	133.1	3,382	133.1	3,382	139.6	3,547	139.6	3,547
GP40KL		DP45K		GP45K		DP50K		GP50K	
11.2 / 12.1	18.0 / 19.5	10.9 / 12.1	17.5 / 19.5	11.2 / 12.1	18.0 / 19.5	13.4 / 14.6	21.5 / 23.5	13.4 / 14.6	21.5 / 23.5
100 / 100	510 / 510	85 / 89	430 / 450	87 / 87	440 / 440	85 / 89	430 / 450	87 / 87	440 / 440
98 / 98	500 / 500	98 / 98	500 / 500	98 / 98	500 / 500	98 / 98	500 / 500	98 / 98	500 / 500
5,417	24,100	4,361	19,400	5,395	24,000	5,957	26,500	7,508	33,400
6,294	28,000	5,125	22,800	6,272	27,900	7,531	33,500	9,352	41,600
25.8		20.3		23.0		27.3		30.3	
30.6 / 25.2		24.1 / 24.1		27.2 / 23.5		35.6 / 26.3		39.3 / 25.3	
GP40KL		DP45K		GP45K		DP50K		GP50K	
13,162	5,970	14,727	6,680	14,396	6,530	15,785	7,160	15,543	7,050
19,290 / 2,690	8,750 / 1,220	21,473 / 3,175	9,740 / 1,440	20,966 / 3,351	9,510 / 1,520	23,612 / 3,197	10,710 / 1,450	23,479 / 3,086	10,650 / 1,400
5,379 / 7,782	2,440 / 3,530	5,776 / 8,951	2,620 / 4,060	5,269 / 9,127	2,390 / 4,140	6,526 / 9,259	2,960 / 4,200	6,393 / 9,149	2,900 / 4,150
GP40KL		DP45K		GP45K		DP50K		GP50K	
300 x 15-20PR		300 x 15-20PR		300 x 15-20PR		300 x 15-20PR		300 x 15-20PR	
7.50 x 16-12PR		7.50 x 16-12PR		7.50 x 16-12PR		7.50 x 16-12PR		7.50 x 16-12PR	
7.00 x 12-12PR		7.00 x 12-12PR		7.00 x 12-12PR		7.00 x 12-12PR		7.00 x 12-12PR	
78.7	2,000	78.7	2,000	78.7	2,000	84.6	2,150	84.6	2,150
46.3	1,175	46.3	1,175	46.3	1,175	46.3	1,175	46.3	1,175
51.6	1,310	51.6	1,310	51.6	1,310	51.6	1,310	51.6	1,310
46.5	1,180	46.5	1,180	46.5	1,180	46.5	1,180	46.5	1,180
5.9	150	5.9	150	5.9	150	5.9	150	5.9	150
9.8	250	9.8	250	9.8	250	9.8	250	9.8	250
hydraulic w / vacuum boost		hydraulic w / vacuum boost		hydraulic w / vacuum boost		hydraulic w / vacuum boost		hydraulic w / vacuum boost	
hand, mechanical		hand, mechanical		hand, mechanical		hand, mechanical		hand, mechanical	
GP40KL		DP45K		GP45K		DP50K		GP50K	
TB45		S6S		TB45		S6S		TB45	
97	72.0	84	62.5	97	72.0	84	62.5	97	72.0
2,450		2,450		2,450		2,450		2,450	
207	28.6	184	25.5	207	28.6	184	25.5	207	28.6
1,200		1,600		1,200		1,600		1,200	
6 / 275	6 / 4,500	6 / 305	6 / 4,996	6 / 275	6 / 4,500	6 / 305	6 / 4,996	6 / 275	6 / 4,500
powershift		powershift		powershift		powershift		powershift	
1 / 1		1 / 1		1 / 1		2 / 2		2 / 2	
2,770	191	2,770	191	2,770	191	2,770	191	2,770	191
84.5		84.5		84.5		84.5		84.5	

NOTE: These specifications assume the use of drive axles, tires, and tilt angles specified. Any modification to specifications, or any other combination of specifications made after the shipment of the truck, requires prior written approval from Mitsubishi Caterpillar Forklift America Inc. ("MCFA"). (See ASME B56.1 Part II 4.2.) Also be advised that overall operating visibility may be affected by the mast configuration and mast options of your lift truck. Therefore, you may need to add ancillary [auxiliary] devices or modify your operating practices. Consult your dealer for further information.

Call-out numbers shown in diagram correspond to the first column of the specifications chart.



Safety Standards

These trucks meet American National Standards Institute/ Industrial Truck Standards Development Foundation, ANSI/ITSDF B56.1. UL-Classified by Underwriters Laboratories, Inc., as to fire and electric shock hazard only; Type G, G/LP, LP, D (standard). Type GS, LPS and DS. Users should be aware of, and adhere to, applicable codes and regulations regarding operator training, use, operation and maintenance of powered industrial trucks, including:

- ANSI/ITSDF B56.1.
- NFPA 505, fire safety standard for powered industrial trucks - type designations, areas of use, maintenance, and operation.
- Occupational Safety and Health Administration (OSHA) regulations that may apply.

Specifications, equipment, technical data, photos and illustrations based on information at time of printing and subject to change without notice. Some products may be shown with optional equipment.

Option Packages

Your local Cat lift truck dealer can provide more information on which option package may best suit your specific applications and material handling requirements.

Maximize Your Investment

Cat Lift Trucks offers three innovative Option Packages specifically designed for those heavy duty applications. Equip your trucks with these options and maximize the ROI on your equipment.

- **Awareness Enhancement Package** - enhances the visibility of the truck and reduces the risk to pedestrian traffic.
- **Service Indicator Package** - advanced service indicators that keep operators informed of the overall condition of the truck.
- **Dust and Foundry Package** - protects the equipment from dust, dirt and other contaminants.





Quality

Reliability

Customer Service

Experienced professionals at our dealerships and on our National Accounts Team can assist you with your lift truck purchase or lease. Your Cat lift truck dealer can provide options and additional visual and audible warning devices geared toward your specific requirements. Operator training programs are also available to boost productivity and to help reduce the potential for product damage and personal injury.



Gas, LP Gas And Diesel Pneumatic

Capacity: 8,000-11,000 lb

CAT[®] Lift Trucks

Copyright © 2008 by MCFA. All rights reserved. CAT, CATERPILLAR, their respective logos, "Caterpillar Yellow" and the POWER EDGE trade dress, as well as corporate and product identity used herein, are trademarks of Caterpillar and may not be used without permission. All registered trademarks are the property of their respective owners. Some products may be shown with optional equipment. Printed in U.S.A.

CECV0015

02/08

1-800-CAT-LIFT

www.cat-lift.com